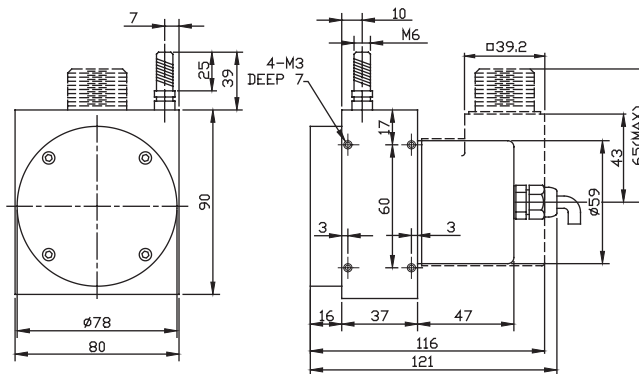


HLS-M



◀ LINEAR WIRE ENCODER ▶

ELECTRICAL SPEC.

Detection System	Incremental 增量型
Output Wave 輸出波形	Square Wave 方波
Stroke (mm) 量測行程	200, 500, 1000, 2000, 3000, 4000, 5000
Resolution (mm/pulse) 解析	1, 0.5, 0.2, 0.1, *0.05 (*0.05 mm only for stroke: 500, 1000, 2000 mm)
Accuracy 精度	(stroke 500~1000 mm)±0.03% FS, ±1 count; (stroke 2000~5000 mm)±0.05% FS, ±1 count
Output Phase 輸出相	AB or ABZ phase
Electronics 電路特性	Voltage 電壓型, Open Collector 電流型, Push Pull 推挽式 or Line Driver 差動式
Power Supply 供應電源	DC 8~26V, DC 5V fixed
Current Consumption 消耗電流	≤ 60 mA
Output Capacity 輸出容量	Sync. Current: 20 mA, Residual Voltage: 0.5V or less
Max. Response 最大響應頻率	10K Hz ~ 50K Hz
Phase Different 相位差	A, B phase different 90°±45° (T/4±T/8), Z phase T±T/2
Wave Form Rise / Fall 波形上下時間	2 μs or less

MECHANICAL SPEC.

Wire specification 線徑規格	Material: SUS304 with nylon coating (stroke < 3 m) Diameter: 0.6 mm; Breaking load: 16 Kg (stroke ≥ 3 m) Diameter: 0.7 mm; Breaking load: 23 Kg
Starting Torque (at 25°C) 起動轉軸	≥ 600 g
Max. Travel Speed 最大往復速度	1,000 mm / sec.
Vibration 震動	10g (10± 1,500 Hz)
Polarity 極性保護	Against Reverse Protection (not with 5V)
Shock 衝擊	20g per 11 ms
Cable 電線	Ø5.4, 100 cm long
Weight 重量	< 1,000 g
Starting Torque on Spring 拉力	(stroke < 2 m) max. 600 g; (stroke ≥ 2 m) max. 900g

ENVIRONMENTAL SPEC.

Operating Temp. / Humidity 操作溫度/濕度	-10°C ~ 60°C, RH 35% ~ 90% (No Condensation)
Storage Temp. 儲存溫度	-20°C ~ 80°C
Protection 保護等級	IP 64 (only for encoder housing)
Life 壽命	Typical > 1 X 10 ⁶ cycles

ORDERING INFORMATION

HLS-M	Measuring Range 量測行程	Resolution 解析	Output Phase 輸出相	Electronics 電路特性	Supply Voltage 供應電源	Connection 連接器
	e.g. 05: 500 mm 10: 1000 mm	e.g. 1: 1 mm 05: 0.5mm	Blank: AB phase *Z: ABZ phase	Blank: Voltage C: Open-Collector PP: Push-Pull *L: Line Driver 5 Vdc *HL: Line Driver 8~26 Vdc	Blank: 8~26 Vdc 5V: 5 Vdc fixed	Blank: Axial Cable *R7: Radial 7 pin *R10: Radial 10 pin